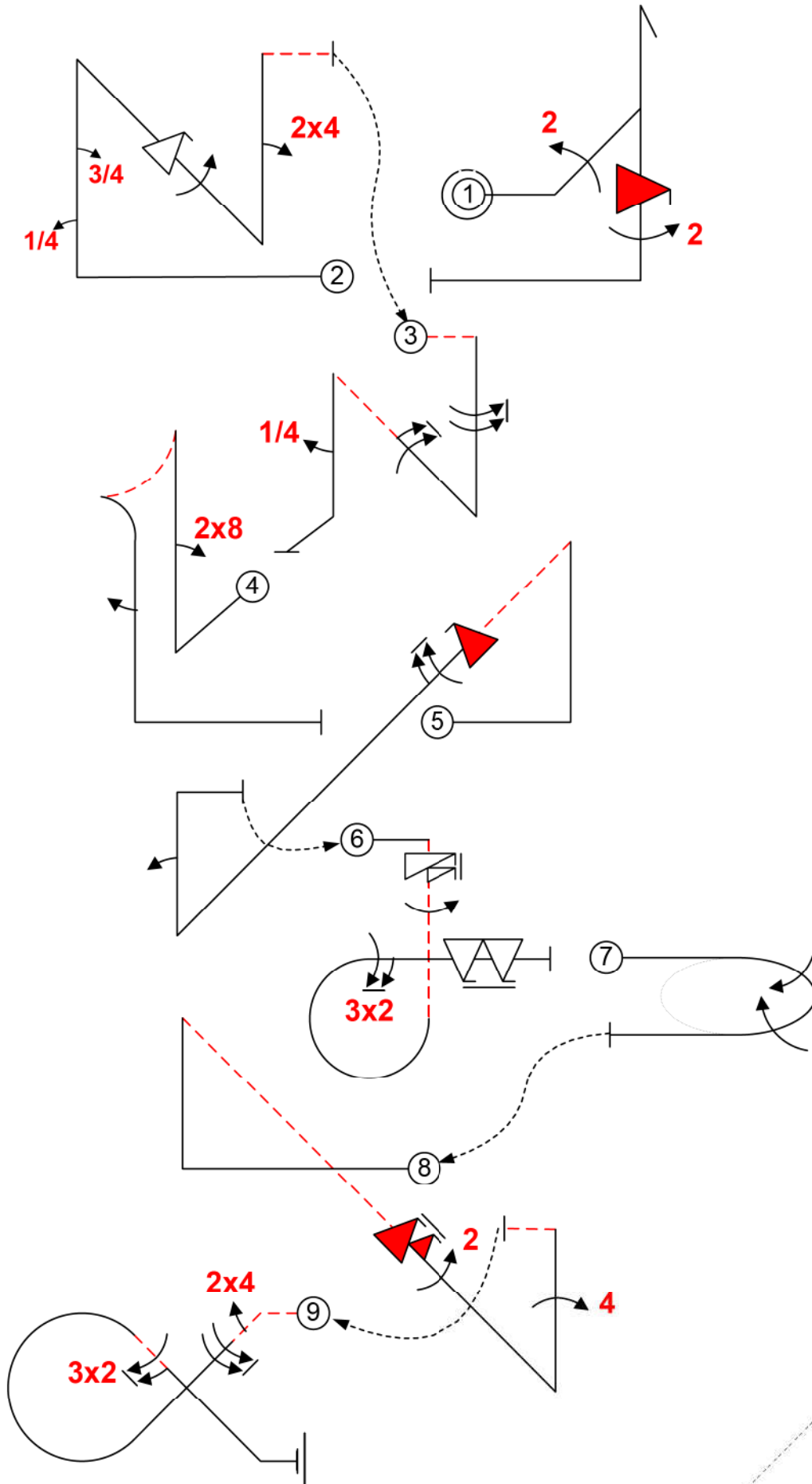


Pilot ID #

Unlimited Free

Flight #



wind/vent

Fig 1	5.3.1.1	18	51
	9.2.2.4	11	
	9.10.5.4	13	
	9.2.5.4	9	
Fig 2	1.3.14.1	22	66
	9.1.1.1	6	
	9.1.1.3	10	
	9.9.4.4	11	
	9.1.4.4	8	
Fig 3	9.4.1.2	9	46
	1.3.11.4	20	
	9.1.2.6	12	
	9.1.5.8	12	
Fig 4	9.1.5.1	2	26
	6.2.2.1	15	
	9.8.1.1	7	
Fig 5	9.1.5.2	4	52
	1.3.12.1	21	
	9.1.1.2	8	
	9.10.4.4	13	
Fig 6	9.1.4.6	10	53
	8.6.4.3	13	
	9.11.1.6	3	
	9.1.5.4	8	
	9.2.3.6	12	
Fig 7	9.9.3.8	17	22
	2.2.5.1	22	
	1.3.11.1	20	
Fig 8	9.4.1.4	15	60
	9.10.4.6	16	
	9.2.4.4	9	
	7.3.4.4	15	
Fig 9	9.1.4.8	12	44
	9.2.4.6	12	
	9.4.4.2	5	
	Total K = 420		

Pilot ID #

Unlimited

Flight #

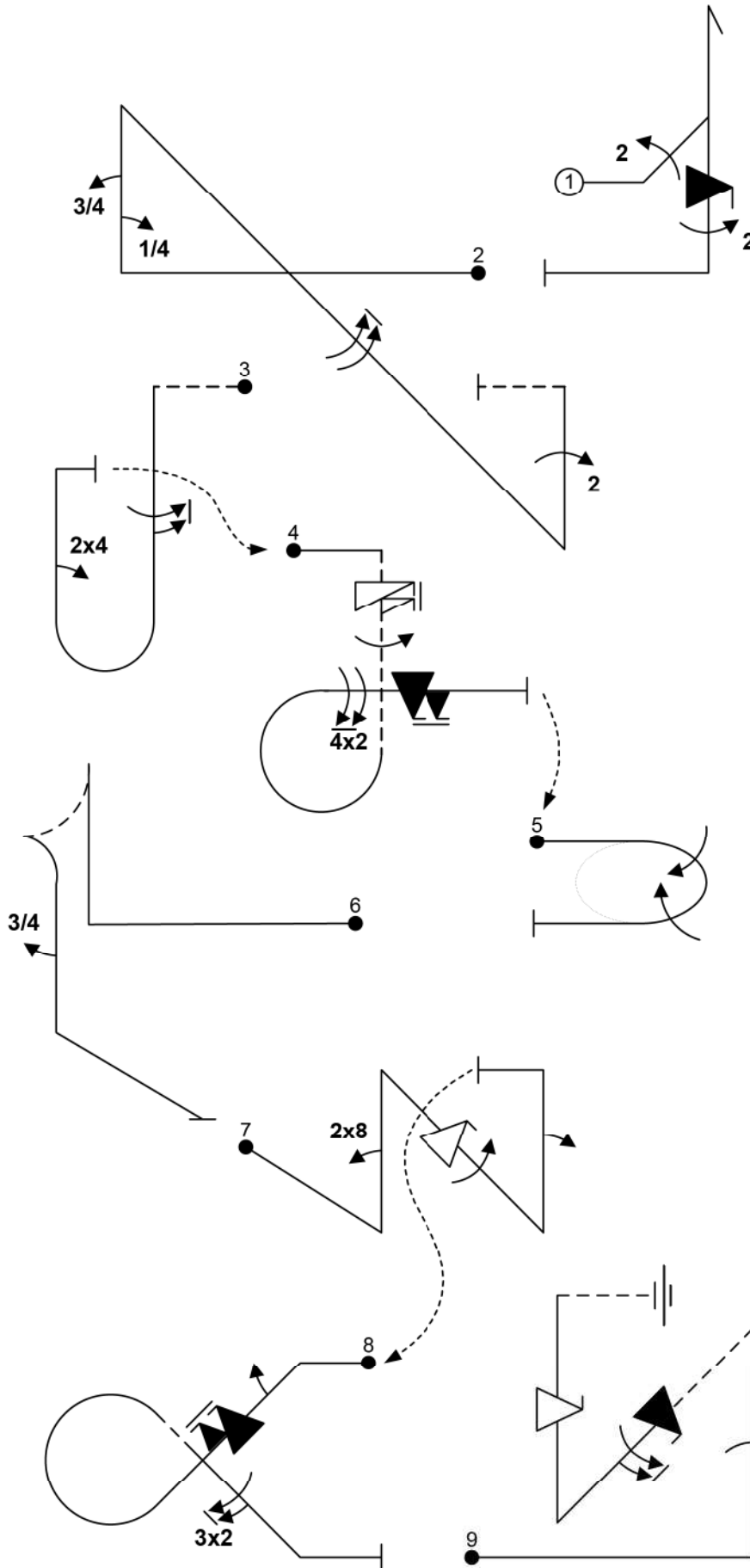
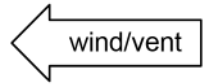


Fig 1	5.3.1.1 9.2.2.4 9.10.5.4 9.2.5.4	18 11 13 9	51
Fig 2	1.3.14.1 9.1.1.1 9.1.4.8 9.1.1.3 9.2.1.4	22 6 12 10 13	63
Fig 3	8.4.2.4 9.4.1.2 9.1.5.6	14 9 10	33
Fig 4	8.6.4.3 9.11.1.6 9.1.5.4 9.2.3.8 9.10.3.6	13 3 8 15 16	55
Fig 5	2.2.5.1	22	22
Fig 6	6.2.2.1 9.1.5.3	15 6	21
Fig 7	1.3.13.1 9.8.1.1 9.1.1.2 9.9.4.4 9.1.4.4	22 7 8 11 8	56
Fig 8	9.10.4.6 9.2.4.6 7.3.3.3 9.1.4.2	16 12 14 4	46
Fig 9	9.10.4.4 9.1.4.6 1.3.11.1 9.9.1.4 9.4.1.4	13 10 20 15 15	73

Total K = 420

Pilot ID #

Unlimited

Flight #

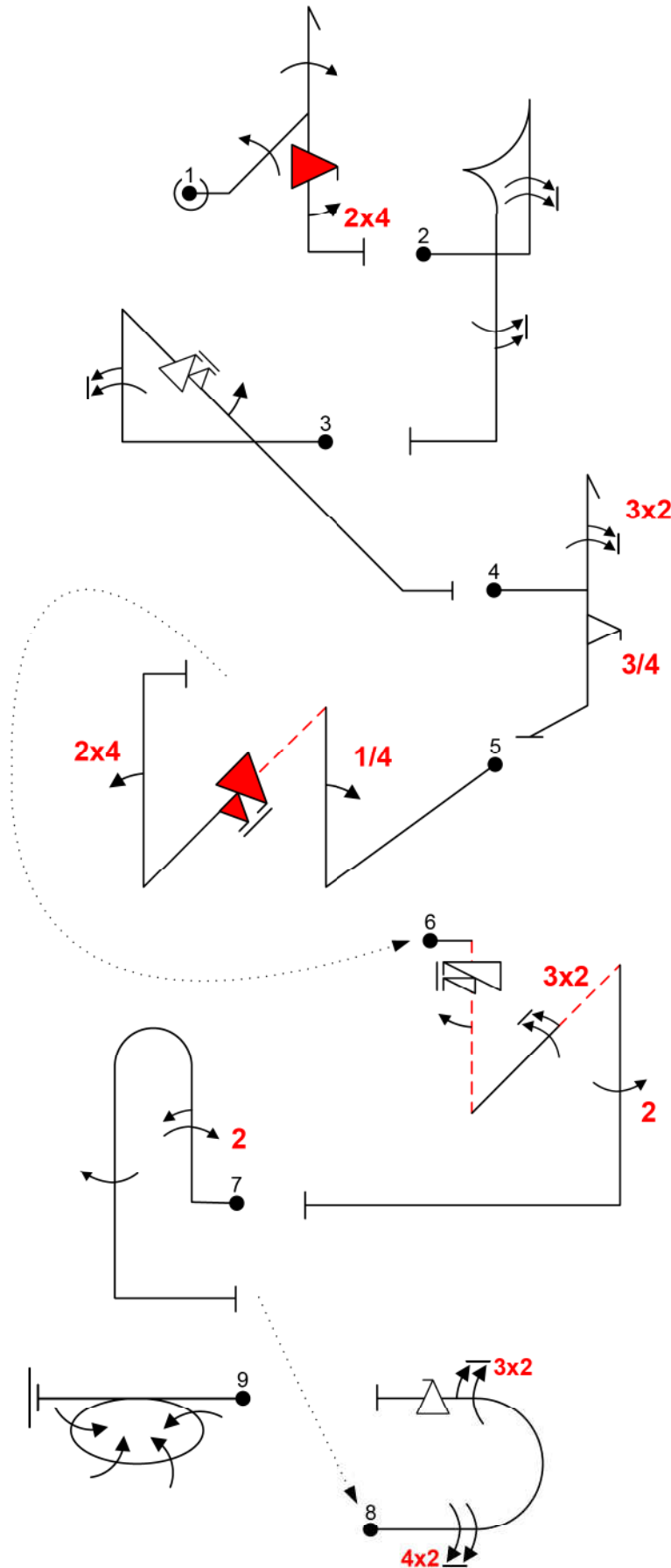
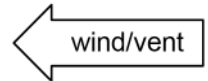


Fig 1	5.3.1.1	18	58
	9.1.1.4	12	
	9.1.2.4	10	
	9.10.5.4	13	
	9.4.5.2	5	
Fig 2	6.2.1.1	15	43
	9.1.1.8	18	
	9.1.5.6	10	
Fig 3	1.2.6.1	14	47
	9.1.1.6	15	
	9.9.4.6	14	
	9.1.4.2	4	
Fig 4	5.2.1.1	17	45
	9.2.1.6	17	
	9.9.5.3	11	
Fig 5	1.3.12.1	21	52
	9.1.1.1	6	
	9.10.4.6	16	
	9.4.1.2	9	
Fig 6	1.3.16.3	21	51
	9.1.1.6	3	
	9.1.5.2	4	
	9.2.2.6	14	
	9.2.5.4	9	
Fig 7	8.4.1.1	13	42
	9.2.1.4	13	
	9.1.1.2	8	
	9.1.5.4	8	
Fig 8	7.2.2.1	6	44
	9.9.3.4	11	
	9.2.3.8	15	
	9.2.3.6	12	
Fig 9	2.4.7.1	38	38

Total K = 420

Pilot ID #

Unlimited Free

Flight #

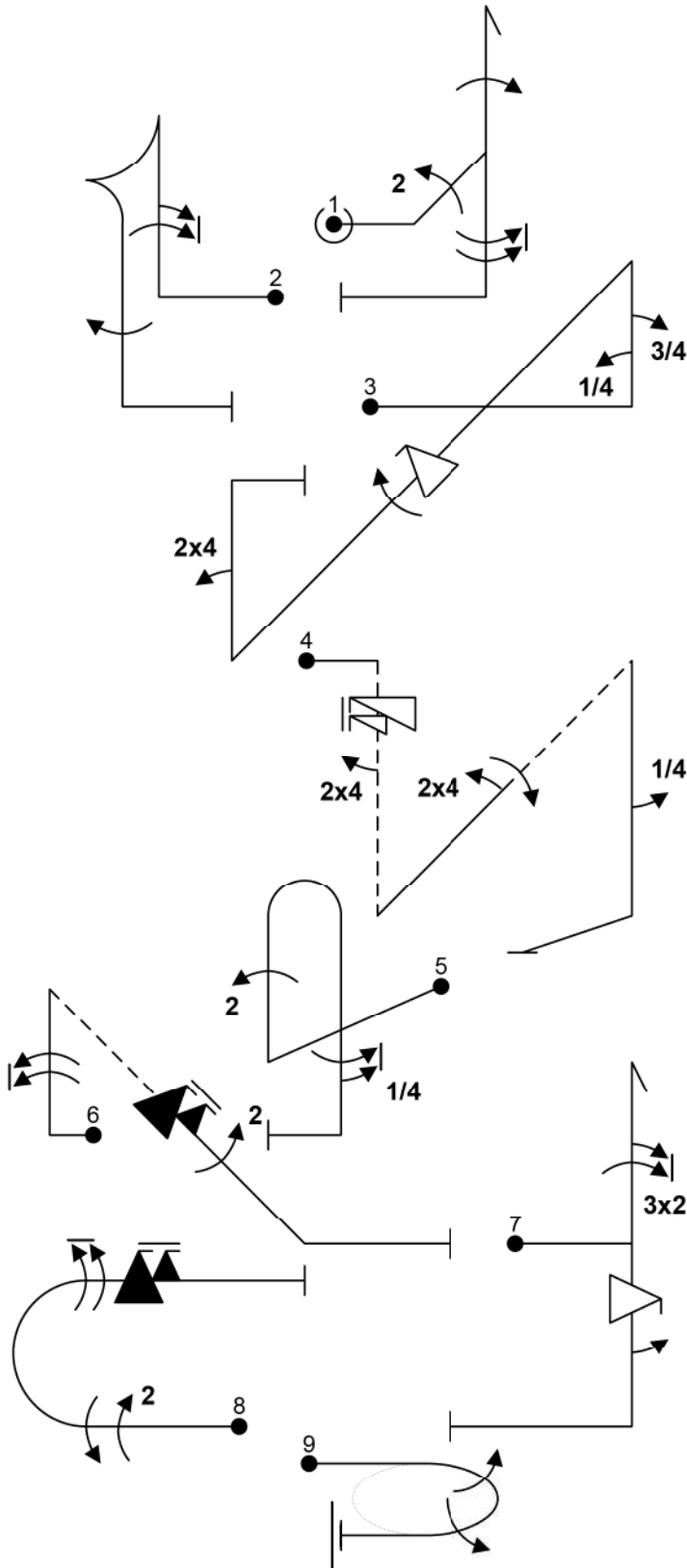
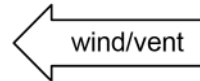


Fig 1	5.3.1.1 9.1.1.4 9.1.5.8 9.2.2.4	18 12 12 11	53
Fig 2	6.2.1.1 9.1.1.6 9.1.5.4	15 15 8	38
Fig 3	1.3.13.1 9.1.1.1 9.1.1.3 9.9.4.4 9.1.4.4 9.4.1.2	22 6 10 11 8 9	66
Fig 4	1.3.16.3 9.1.1.6 9.4.2.2 9.1.2.4 9.4.5.2 9.1.5.1	21 3 7 10 5 2	48
Fig 5	8.4.1.1 9.2.1.4 9.1.5.5	13 13 9	35
Fig 6	1.2.7.1 9.10.4.6 9.2.4.4 9.1.1.8	13 16 9 18	56
Fig 7	5.2.1.1 9.2.1.6 9.9.5.4 9.1.5.2	17 17 11 4	49
Fig 8	7.2.2.1 9.2.3.4 9.1.3.4 9.1.3.8 9.10.3.6	6 9 8 12 16	51
Fig 9	2.2.5.3	24	24
Total K = 420			

Pilot ID #

Unlimited Free

Flight #

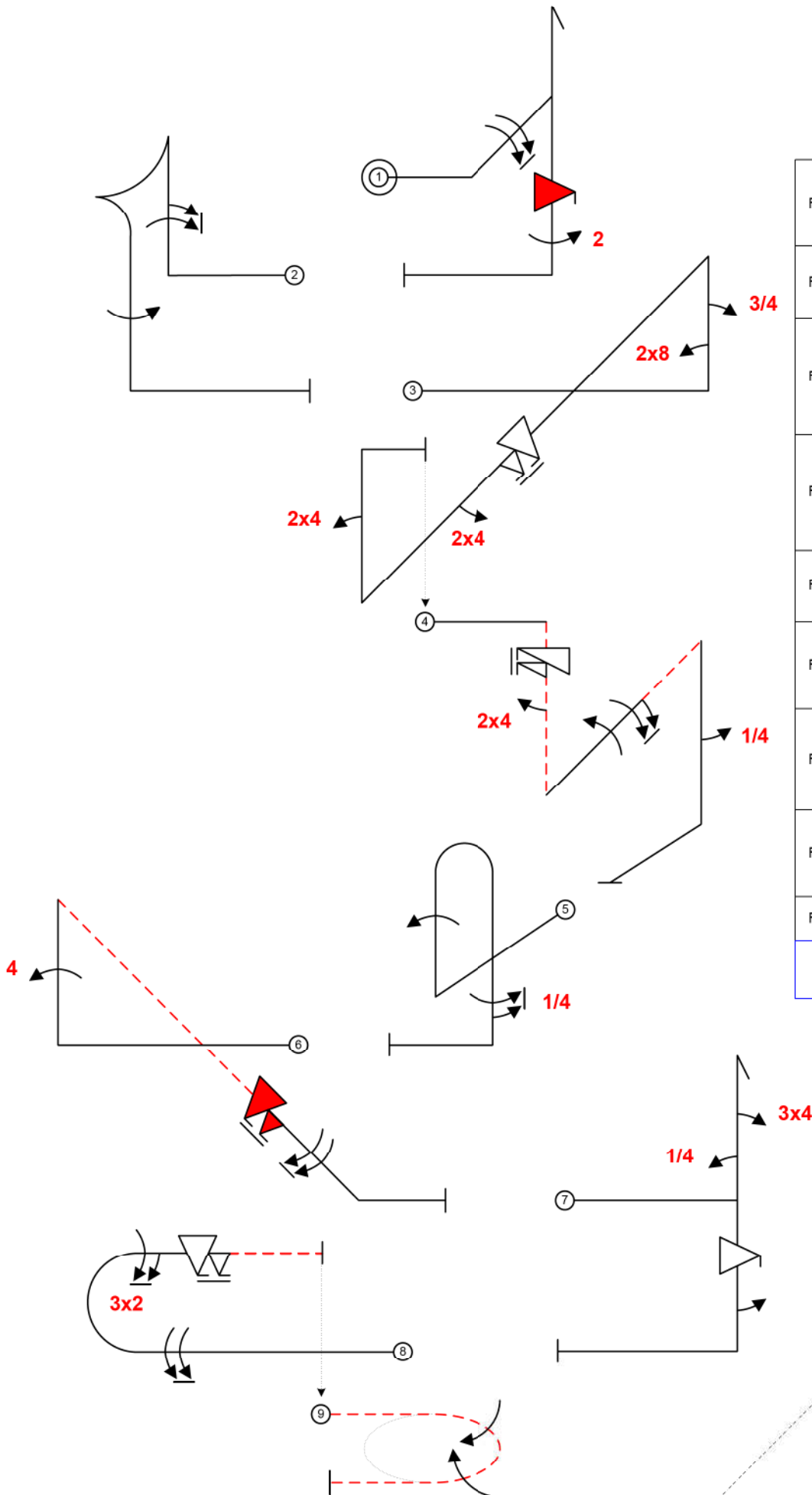
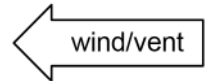


Fig 1	5.3.1.1 9.10.5.4 9.1.2.8 9.2.5.4	18 13 15 9	55
Fig 2	6.2.1.1 9.1.1.6 9.1.5.4	15 15 8	38
Fig 3	1.3.13.1 9.9.4.6 9.8.1.1 9.1.1.3 9.4.1.2 9.4.4.2	22 14 7 10 9 5	67
Fig 4	1.3.16.3 9.11.1.6 9.1.5.1 9.1.2.4 9.1.2.6 9.4.5.2	21 3 2 10 12 5	53
Fig 5	8.4.1.1 9.1.1.4 9.1.5.5	13 12 9	34
Fig 6	9.4.1.4 9.10.4.6 1.2.7.1 9.1.4.8	15 16 13 12	56
Fig 7	5.2.1.1 9.9.5.4 9.1.5.2 9.1.1.1 9.4.1.3	17 11 4 6 12	50
Fig 8	7.2.1.1 9.1.3.8 9.9.3.6 9.2.3.6	6 12 14 12	44
Fig 9	2.2.5.2	23	23
Total K = 420			

Pilot ID #

Unlimited Free

Flight #

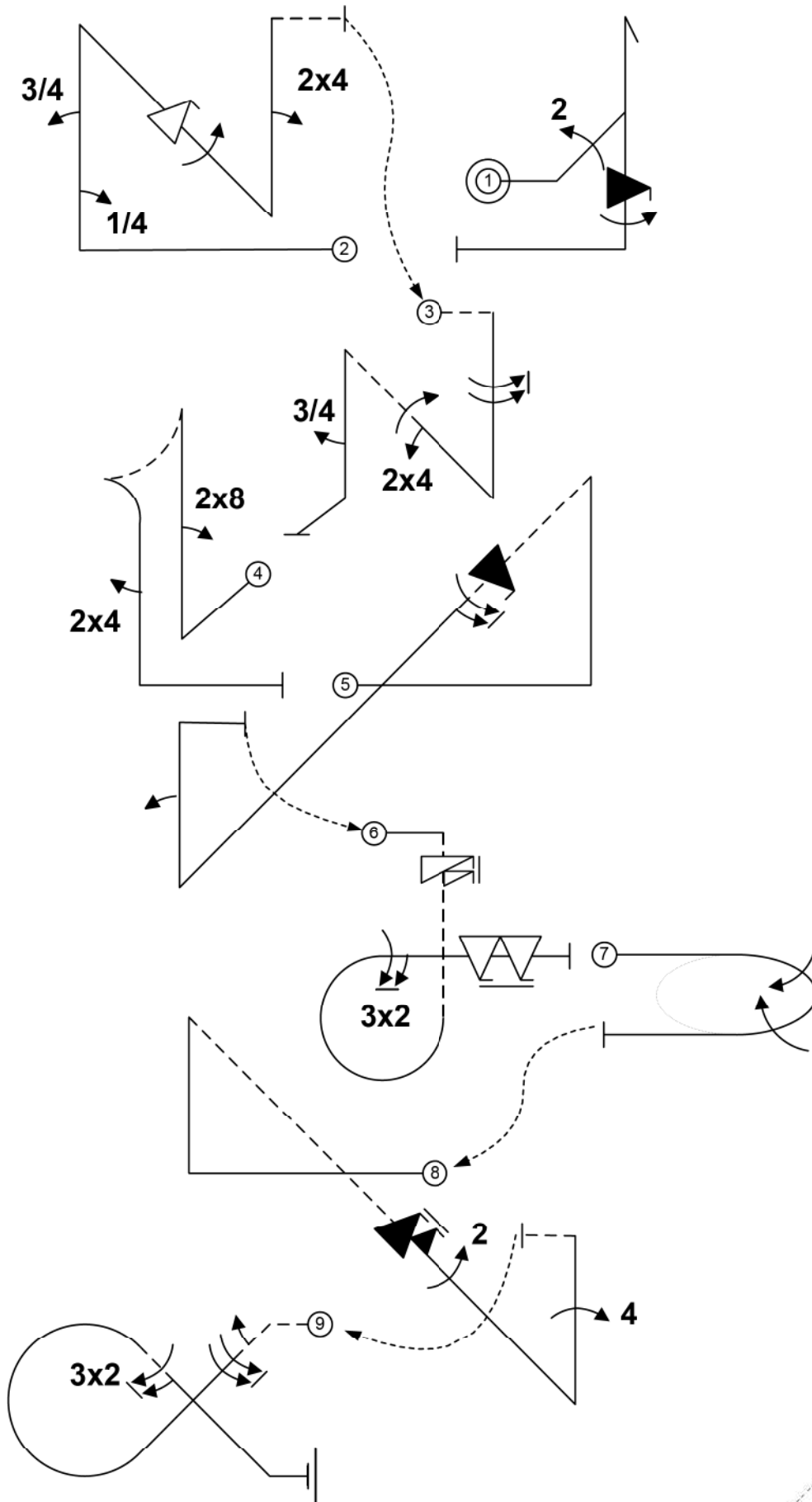


Fig	Code	K	Points
Fig 1	5.3.1.1	18	50
	9.2.2.4	11	
	9.10.5.4	13	
	9.1.5.4	8	
Fig 2	1.3.14.1	22	66
	9.9.4.4	11	
	9.1.4.4	8	
	9.4.1.2	9	
	9.1.1.3	10	
	9.1.1.1	6	
Fig 3	1.3.11.4	20	55
	9.1.5.8	12	
	9.1.5.3	6	
	9.4.2.2	7	
	9.1.2.4	10	
Fig 4	6.2.2.1	15	27
	9.8.1.1	7	
	9.4.5.2	5	
Fig 5	1.3.12.1	21	52
	9.1.4.6	10	
	9.1.1.2	8	
	9.10.4.4	13	
Fig 6	8.6.4.3	13	45
	9.11.1.6	3	
	9.2.3.6	12	
	9.9.3.8	17	
Fig 7	2.2.5.1	22	22
Fig 8	1.3.11.1	20	60
	9.4.1.4	15	
	9.10.4.6	16	
	9.2.4.4	9	
Fig 9	7.3.4.4	15	43
	9.1.4.2	4	
	9.1.4.8	12	
	9.2.4.6	12	
Total K = 420			

The sequence has been checked by Aresti software and is free from detectable errors.

Pilot ID #

Unlimited

Flight #

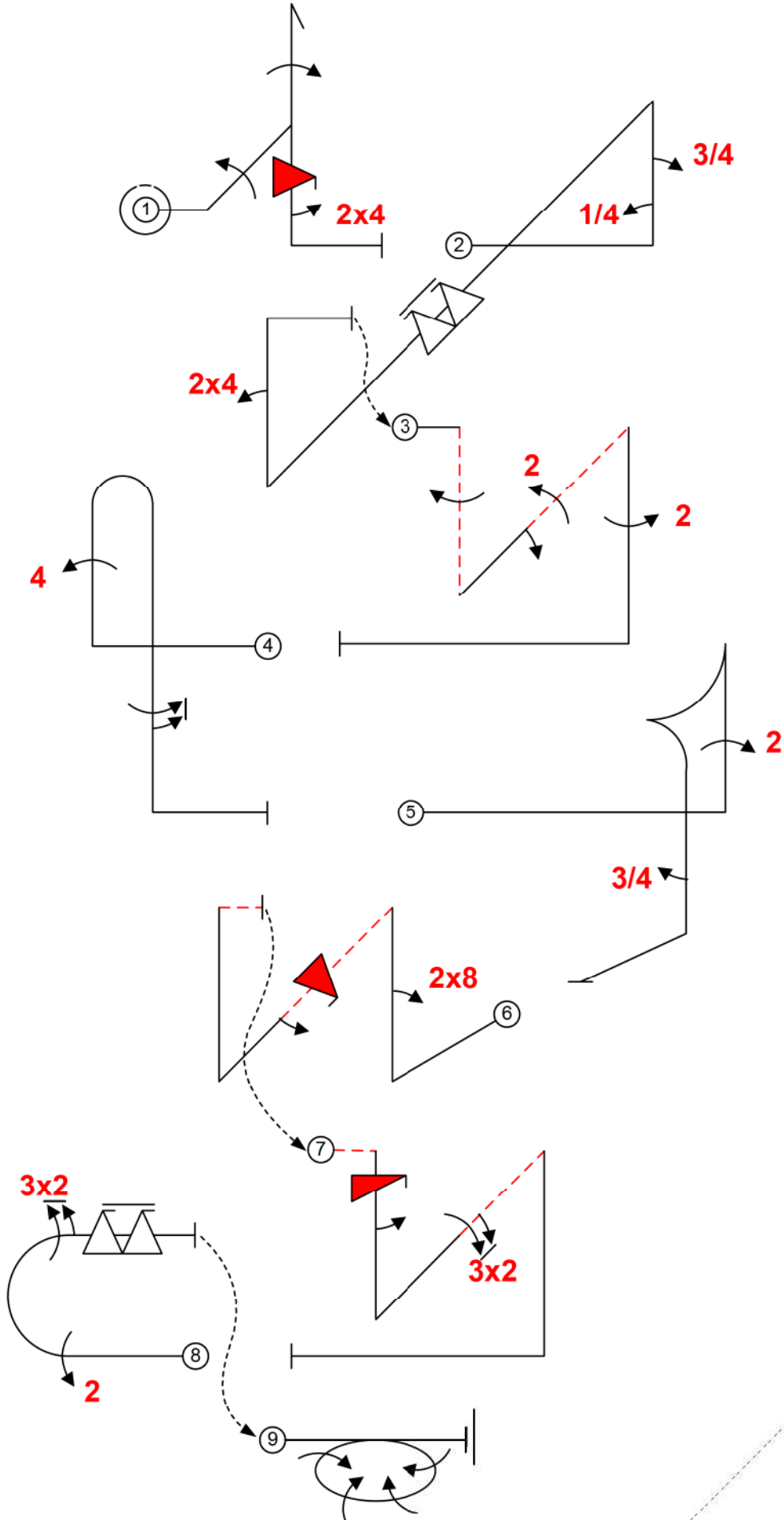
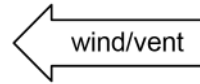


Fig 1	5.3.1.1	18	58
	9.1.2.4	10	
	9.1.1.4	12	
	9.10.5.4	13	
Fig 2	1.3.13.1	22	64
	9.1.1.1	6	
	9.1.1.3	10	
	9.9.4.8	17	
Fig 3	1.3.16.3	21	55
	9.1.5.4	8	
	9.1.2.2	6	
	9.2.2.4	11	
Fig 4	8.4.1.1	13	38
	9.4.1.4	15	
	9.1.5.6	10	
Fig 5	6.2.1.1	15	34
	9.2.1.4	13	
	9.1.5.3	6	
Fig 6	1.3.11.1	20	44
	9.8.1.1	7	
	9.10.4.4	13	
	9.1.4.2	4	
Fig 7	1.3.11.4	20	45
	9.12.1.4	7	
	9.1.5.2	4	
	9.2.2.6	14	
Fig 8	7.2.2.1	6	44
	9.9.3.8	17	
	9.2.3.4	9	
	9.2.3.6	12	
Fig 9	2.4.7.1	38	38

Total K = 420

Pilot ID #

Unlimited Free

Flight #

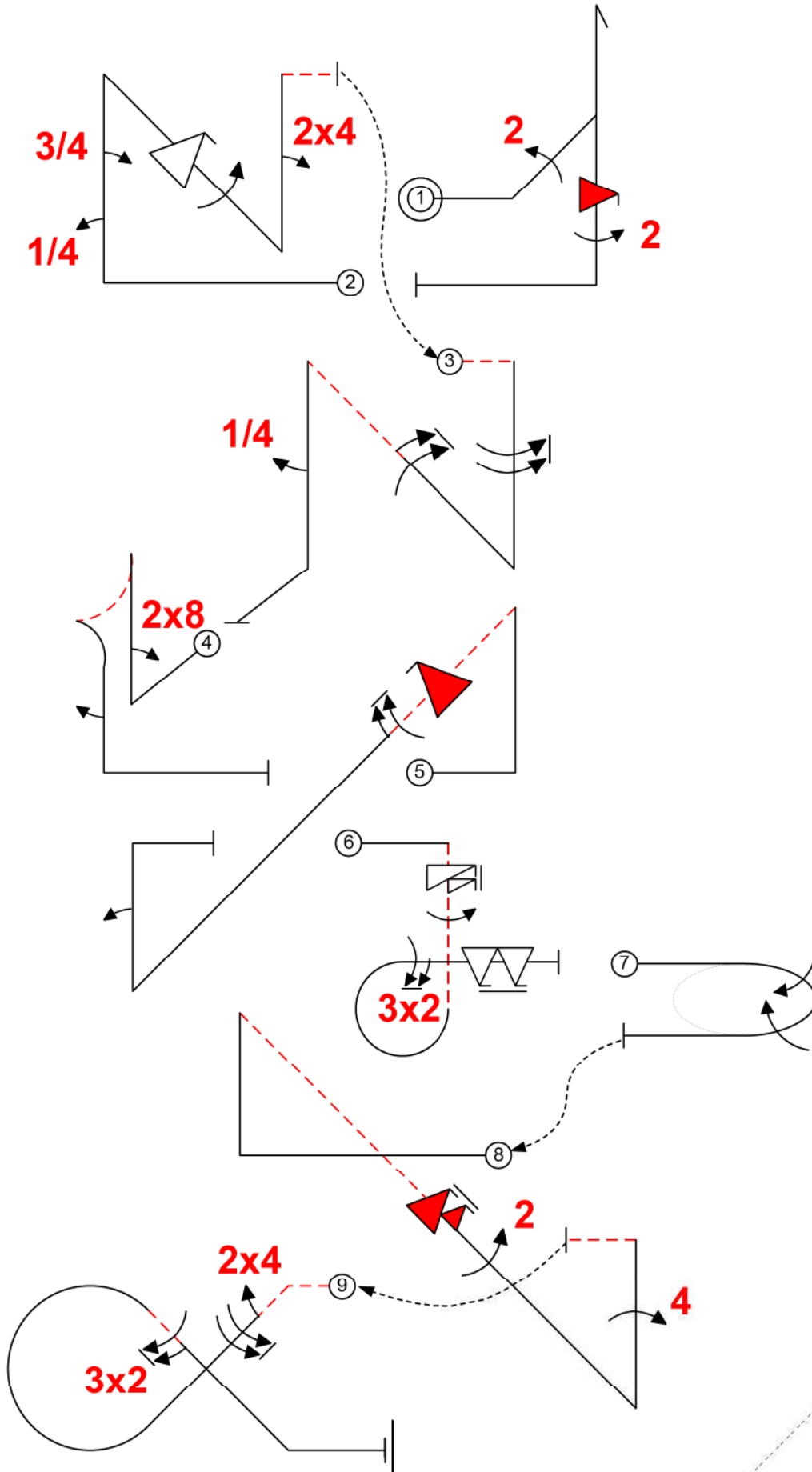
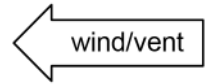


Fig 1	5.3.1.1	18	51
	9.2.2.4	11	
	9.10.5.4	13	
	9.2.5.4	9	
Fig 2	1.3.14.1	22	66
	9.1.1.1	6	
	9.1.1.3	10	
	9.9.4.4	11	
	9.1.4.4	8	
Fig 3	1.3.11.4	20	46
	9.1.5.8	12	
	9.1.2.6	12	
	9.1.5.1	2	
Fig 4	6.2.2.1	15	26
	9.8.1.1	7	
	9.1.5.2	4	
Fig 5	1.3.12.1	21	52
	9.10.4.4	13	
	9.1.4.6	10	
	9.1.1.2	8	
Fig 6	8.6.4.3	13	53
	9.11.1.6	3	
	9.1.5.4	8	
	9.2.3.6	12	
	9.9.3.8	17	
Fig 7	2.2.5.1	22	22
Fig 8	1.3.11.1	20	60
	9.10.4.6	16	
	9.2.4.4	9	
	9.4.1.4	15	
Fig 9	7.3.4.4	15	44
	9.4.4.2	5	
	9.1.4.8	12	
	9.2.4.6	12	
Total K = 420			

Pilot ID #

Unlimited

Flight #

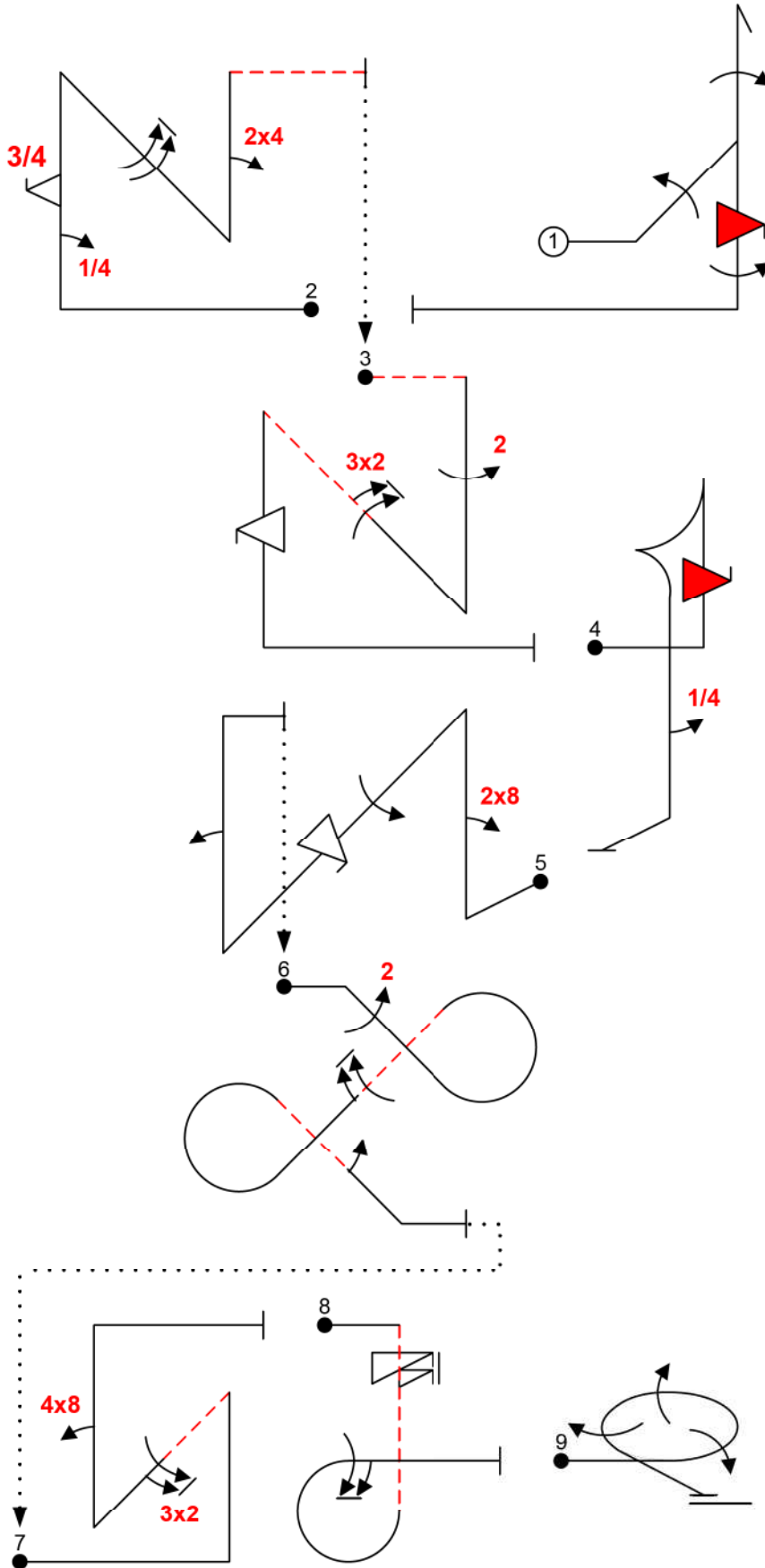
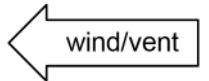


Fig 1	5.3.1.1	18	61
	9.1.2.4	10	
	9.1.1.4	12	
	9.10.5.4	13	
Fig 2	9.1.5.4	8	64
	1.3.14.1	22	
	9.1.4.8	12	
	9.1.1.1	6	
Fig 3	9.4.1.2	9	54
	9.9.1.3	15	
	1.3.11.4	20	
	9.2.5.4	9	
Fig 4	9.9.5.4	11	36
	9.2.2.6	14	
	6.2.1.1	15	
	9.1.5.1	2	
Fig 5	9.10.6.4	19	56
	1.3.13.1	22	
	9.8.1.1	7	
	9.9.4.4	11	
Fig 6	9.1.1.2	8	46
	9.1.4.4	8	
	7.8.15.3	23	
	9.2.4.4	9	
Fig 7	9.1.4.6	10	44
	9.1.4.2	4	
	1.3.12.1	21	
	9.2.4.6	12	
Fig 8	9.8.1.2	11	26
	9.11.1.6	3	
	8.6.4.3	13	
	9.1.3.6	10	
Fig 9	2.3.4.3	33	33

Total K = 420